



K9-DIESEL

RUGGED, DURABLE AND RELIABLE

Each TraumaFX® product is designed from the ground up for ruggedness and durability with careful consideration of materials and manufacturing processes to create products that last. They are water resistant and can be used in nearly any weather condition or environment, and can be transported in any vehicle to ensure the most authentic training experience.

REMOTE CONTROLLED WITH REAL-TIME SENSOR DATA

All TraumaFX® high-fidelity simulators are operated with a long-range touchscreen remote controller which includes real-time telemetry to monitor medical interventions. Easy to use software takes only minutes to learn and sensor data is immediately displayed on the main control screen for quick reference. The display shows key vitals and provides instructors with instant data on the effectiveness of student interventions such as tourniquet application, wound hemostasis, airway intervention, needle decompression, and chest tube placement.

REMOTE CONTROL & SENSOR FEATURES

The wireless handheld remote control includes programmable scenarios for ease of operations. It provides full system operation from up to 200 yards away and includes real-time telemetry for sensor feedback and vitals data.



Handheld remote control

- Respiration rate
- Pulse strength
- Wound hemostasis
- Pulse rate
- Tension pneumothorax
- GDV setting

Confidentiality Notice:

TraumaFX® and Multiple Amputation Trauma Trainer (MATT)® are registered trademarks of TraumaFX® Solutions, Inc. This document contains protected information and its contents constitute Confidential and Proprietary Information. Any unauthorized use, disclosure or distribution is strictly prohibited without prior written consent by an authorized TraumaFX® associate.

TRAUMAFX® MULTIPLE AMPUTATION TRAUMA TRAINER (MATT)® AWARDS

AMSO Award

SBIR Award

Governors Award

Modeling & Simulation Training Team Award



PHONE 864.224.0081 | TOLL FREE 1.888.822.6331 | E-MAIL INFO@TACMEDSOLUTIONS.COM | TACMEDSOLUTIONS.COM
1250 Harris Bridge Road, Anderson, SC 29621, USA | ©2021 TACTICAL MEDICAL SOLUTIONS®, LLC. All rights reserved. V3.0



K9 DIESEL

Advanced Canine Medical Trainer.

PRODUCT SPECIFICATIONS

PRODUCT #	KGS-TFX-K9-DSL-1	NSN	6910016758251
DIMENSIONS	LENGTH 42in - (Excludes Tail) 106.7cm		
WEIGHT	FULL - 57lbs / 25.9kg	EMPTY - 55lbs / 24.9kg	
POWER SUPPLY	One (1) 18V Li-ion battery	BLOOD RESERVOIR	-500 ml
CASE DIMENSIONS	62"x26"x16"; 145lbs. 157.5cm x 66cm x 40.6cm; 65.8kg		

CONTRACT VEHICLES

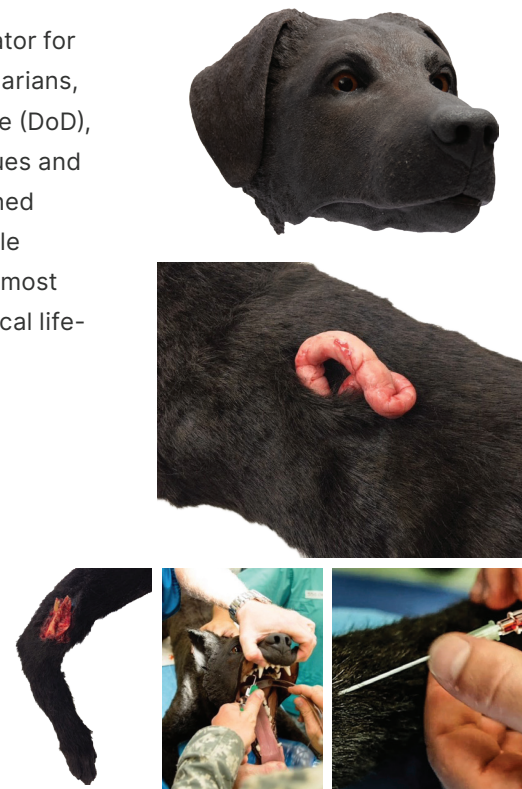
GSA	GS-07F-063DA
DLA ECAT	SPE2DH-18-D-0008
PEO STRI TATT II	W900KK-19-D-0005
PEO STRI VPSS	W900KK-18-D-0012
NATO Logistics Stock Exchange	LB-KGS-01N



All TraumaFX® products are handcrafted in the USA.

K9-DIESEL

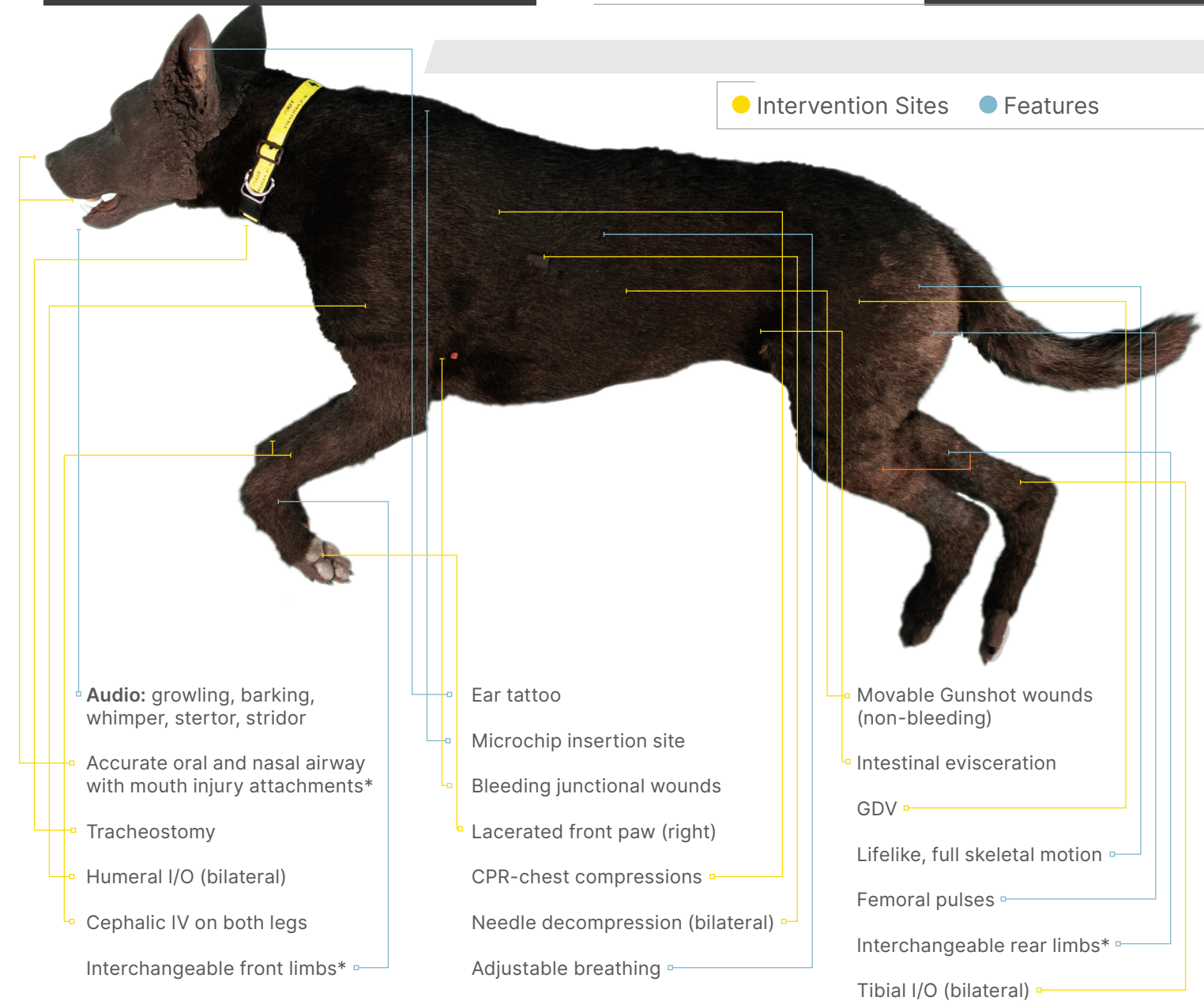
The **TraumaFX® Advanced Canine Medical Trainer (K9 Diesel)** is a full-body simulator for Operational Canine First Responders, Military Working Dog (MWD) handlers, Veterinarians, and Veterinary Technicians. Designed in partnership with the Department of Defense (DoD), **K9 Diesel** is a state of the art skills trainer that includes active breathing, audio queues and over 28 different features and medical intervention sites. All training sites are designed to replicate the look, feel, and function of actual medical procedures. Interchangeable limbs and injuries provide greater flexibility to vary wound patterns. K9 Diesel is the most advanced K9 simulator available and allows learners to perform a wide range of critical life-saving tasks with an incredibly realistic experience.



KEY BENEFITS

- ▶ Lifelike, full anatomical skeletal motion
- ▶ Realistic airway with adjustable breathing - from slow (10 bpm) to panting (120 bpm)
- ▶ Intubation with chest rise and fall (stomach rise and fall if incorrectly placed in esophagus)
- ▶ Interchangeable front and rear limbs: includes front legs with adjustable carpal fractures, two uninjured rear legs, and an amputated left rear leg with pressure-responsive bleeding
- ▶ Audio queues including barking, whimpering, growling, stertor, and stridor
- ▶ Cephalic IV training (bilateral) with flash cue
- ▶ Needle decompression/thoracocentesis with air release (bilateral)
- ▶ Femoral pulses (bilateral), strength and speed adjustable via remote control (50-170 bpm)
- ▶ Reusable lacerated paw for suture and bandage training
- ▶ Gastric Dilatation Volvulus decompression (GDV) site (bloat)
- ▶ CPR chest compressions with resistance
- ▶ Mouth-to-snout resuscitation
- ▶ Infusible (bilateral) Tibial and Humeral intraosseous (I/O) training with reusable bone plugs
- ▶ Intestinal evisceration
- ▶ Packable bleeding junctional wounds (bilateral)
- ▶ Moveable, simulated GSWs for chest seal training
- ▶ Tracheostomy training site with multi-layered tissue
- ▶ Realistic look and feel with a weight of ~60 lbs
- ▶ Hydrophobic fur with washable leg socks
- ▶ Easy care and maintenance
- ▶ Optional limbs/accessories include lower amputation on front leg (left), resettable compound fracture rear leg (right), mouth wound kit with injured mouth and tongue with throat blockage, floppy ears
- ▶ Wireless remote control with real-time sensor data and programmable/customizable scenarios

FEATURES GUIDE



OPTIONAL FEATURES

Wireless handheld remote (RC) with programmable scenarios



* Optional limbs and wound kits sold separately.